

MoviSight

MS7544SSL-TDT-EW Series

Thermal & Optical Bi-spectrum AI PTZ Camera

AI Series



KEY FEATURES

- Supports optical and thermal bi-spectrum image
- Vanadium Oxide Uncooled Focal Plane Arrays
- Thermal Resolution 384×288
- Optical Resolution up to 3072×1728@30fps
- Min. illumination Color: 0.001Lux@F1.6
- Optical zoom: 44×, digital zoom 16×
- Smart IR, IR Range: 300m
- Built-in Speaker
- Built-in Automatic Wiper
- Built-in Electronic Compass
- Support GPS/BDS
- S+265/H.265/H.264/M-JPEG
- Intelligent monitoring/Face Capture mode
- Support Human/Vehicle Classification
- Plugin Free
- IP66

SPECIFICATIONS

Thermal parameters

| | |
|--|---|
| Thermal Sensor Type | Vanadium Oxide Uncooled Focal Plane Arrays |
| Thermal Length | Fixed 50mm |
| Resolution | 384×288 |
| Pixl Interval | 17μm |
| Response Waveband | 8μm~14μm |
| NETD | ≤40mK@f/1.0 |
| Thermal FOV | Horizontal: 7.5°, Vertical: 5.6° |
| Measurement Distance Based on the reference: human (1.8m × 0.5m) vehicle (4m × 1.4m) | Detection: 4510m (vehicle), 1471m (human) Recognition: 1127m (vehicle), 368m (human) Identification: 564m (vehicle), 184m (human) |
| Fire Detection Distance Based on the reference: fire (2m×2m) | 3000m |
| Main Stream | PAL: 25fps (384×288) NTSC: 30fps (384×288) |
| Sub Stream | PAL: 25fps (384×288) NTSC: 30fps (384×288) |
| Third Stream | PAL: 25fps (384×288) NTSC: 30fps (384×288) |

Camera

| | |
|---------------------------|---|
| Image Sensor | 1/1.8" CMOS |
| Signal System | PAL/NTSC |
| Min. Illumination | Color: 0.001lux@ (F1.6, ACG ON), BW: 0lux with IR |
| Shutter Time | 1s to 1/100,000s |
| Day & Night | Dual IR Cut Filter with Auto Switch |
| Wide Dynamic Range | 140dB |
| Optical Zoom | 44× |
| Digital Zoom | 16× |

Lens

| | |
|-----------------------|--|
| Focal Length | 6mm~264mm |
| Zoom Speed | <5s |
| Angle of View | Horizontal filed of view: 61.8° (w)~2.3° (t) |
| Aperture Range | F1.6~F5.3 |

Pan&Tilt

| | |
|-------------------------|---|
| Pan Range | 360° |
| Pan Speed | Pan Manual Speed: 0.1°~160°/s, Pan Preset Speed: 200°/s |
| Tilt Range | -16°~90° (Auto flip) |
| Tilt Speed | Tilt Manual Speed: 0.1°~120°/s, Tilt Preset Speed: 120°/s |
| 3D Position | Yes |
| Presets | 500 |
| Preset Accuracy | ±0.3° |
| Scan | 8 |
| Cruise | 16, up to 32 presets per cruise |
| Pattern | 8, each with 600s memory or 1000 orders |
| Power-off Memory | Yes |
| RS-485 Protocols | DOME_PELCO_D , DOME_PELCO_P , DOME_PLUS |

Illuminator

| | |
|-----------------------------|---------------------------------------|
| IR LEDs | 11 |
| IR Range | Up to 300m |
| IR Irradiation Angle | Adjustable by Zoom |
| White LEDs | 2, support white/blue/red light flash |

Compression Standard

| | |
|--------------------------|------------------------------|
| Video Compression | S+265/H.265/H.264/M-JPEG |
| Video Bit Rate | 32Kbps~16Mbps |
| Audio Compression | G.711A/G.711U/ADPCM_D/AAC_LC |
| Audio Bit Rate | 8K ~ 48Kbps |

Image

| | |
|--------------------------|---|
| Max. Resolution | 5.0MP (3072x1728) |
| Main Stream | PAL: 25fps (3072x1728), 50fps (2560x1440, 2304x1296, 1920x1080, 1280x720) NTSC: 30fps (3072x1728), 60fps (2560x1440, 2304x1296, 1920x1080, 1280x720) |
| Sub Stream | PAL: 25fps (704x576, 704x288, 640x360, 352x288) NTSC: 30fps (704x480, 704x240, 640x360, 352x240) |
| Third Stream | PAL: 25fps (1920x1080, 1280x720, 704x576, 640x480, 704x288, 352x288) NTSC: 30fps (1920x1080, 1280x720, 704x480, 640x480, 704x240, 352x240) |
| Image Setting | Saturation, brightness, contrast, sharpness, adjustable by client software or web browser |
| Image Enhancement | BLC/3D DNR/HLC |
| ROI | 7 Dynamic Areas for Both Main and Sub Stream |
| OSD | 16x16, 24x24, 32x32, 48x48, 64x64, 96x96, 128x128, adaptable size, Letters such as Week, Date, Time, Total 5 Regions |
| Picture Overlay | Yes |
| Privacy Mask | Yes |
| Smart Defog | Yes |

Feature

| | |
|----------------------------------|--|
| Alarm Trigger | Harsh Voice Alarm, Motion Detection, Mask Alarm, Network Disable Alarm, IP Conflict, MAC Conflict Detection |
| Video Analytics (Optical) | Tripwire, Double Tripwire, Perimeter, Object Abandon, Object Lost, Loitering, Running, Heatmap, Video Abnormal, Crowd, Audio Abnormal, Demographics(People Counting), On Duty Detection, Safety Helmet Detection, Auto tracking, Face Capture, Early Warning |
| Video Analytics (Thermal) | Tripwire, Double Tripwire, Perimeter, Temperature Alarm, Fire/Smoke Detection |
| Early Warning(EW) | Yes |
| Auto-Tracking | Yes |

Face Detection and Analytics

| | |
|-----------------------------------|---|
| Operating Mode | Face capture, intelligent monitoring optional, default intelligent monitoring |
| Face Detection Performance | Detects up to 32 faces at the same scene |
| Face Exposure Brightness | Default 35, 1~100 brightness optional |
| Min. Face Pixel | Default 80, 19~1920 optional |
| Precautionary Alert | Three level |

Network

| | |
|-----------------------------|---|
| Protocols | TCP/UDP/HTTP/MULTICAST/UPnP/DHCP/PPPoE/DDNS/NFS/FTP/NTP/RTP/RTSP/IPv6/SNMP/SMTP/RTMP |
| System Compatibility | ONVIF (PROFILE S/T/G), SDK, CGI, P2P |
| ANR | Auto store video in SD card when NVR disconnected, and upload video to NVR when resumed connection (Only Support MoviSight ANR NVR) |

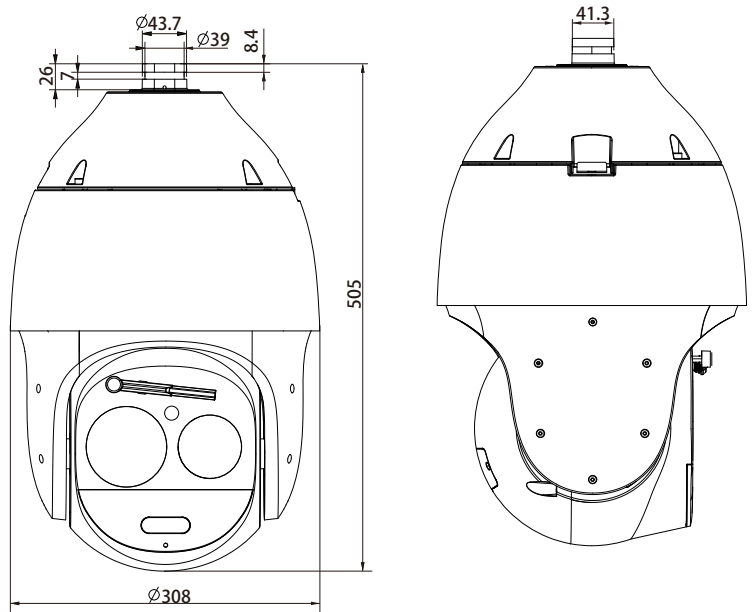
MoviSight

| | |
|--------------------------------|---|
| Remote Connection | ≤7 |
| Client | MoviSight Free CMS |
| Web Version | web6 |
| Interface | |
| Communication Interface | 2 RJ45 100M/1000M self adaptive Ethernet ports |
| Audio | 1/1 |
| Alarm | 8/2 |
| Speaker | Yes |
| Reset Button | Yes |
| On-board storage | Built-in Micro SD card slot, up to 256 GB |
| RS-485 | Yes |
| BNC | Yes |
| Wiper | Yes, automatic wiper |
| Electronic Compass | Yes |
| GPS/BDS | Yes |
| General | |
| Firmware Version | - |
| Web Client Language | 15 languages Simple Chinese, Traditional Chinese, English, Spanish, Korean, Italian, Turkish, Russian, Thai, French, Polish, Dutch, Hebraism, Arabic, Vietnamese |
| Operating Conditions | -40°C~70°C (IR OFF), -40°C~40°C (IR ON), 0-95%RH |
| Power Supply | AC24V±25%, DC24V±10% |
| Power Consumption | 30W(IR OFF), 66.96W(IR ON) |
| Protection | IP66, Lightning protection, surge protection and voltage transient protection meets EN 55035:2017 |
| Heater | N/A |
| Dimensions | Φ445x700mm (Φ308x506inch) |
| Weight | 11.85kg (21.62lb) |

* Listed resolutions are only selectable options. It does not mean that all streams can work at their maximum resolution at the same time.

MoviSight

DIMENSIONS (Unit: mm)



ACCESSORIES

INCLUDED



MS-WMA
Wall Mount

OPTIONAL



MS-IA
Installation Adapter



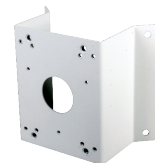
MS-CM
Ceiling Mount



MS-PM
Pendant Mount



MS-PMA
Pole Mount



MS-CMA
Corner Mount



MS-CJB
Junction Box

