

## MS7000D-PTZ-MTDT Mini Series

Dual Vision Analytics and Radiometrics Low Consumption Mini PTZ Camera



- On-Board Temp-Detection Algorithm
- One IP address Two channels
- Effective Pixels 400x300
- Sensitivity 40mK
- 8/25mm Motorized Lens Optional
- 20 Spots / 2 Lines / 16 Areas Temperature Detection
- 17 Color Control
- Power Off Self-Locking, Strong Wind Resistance
- Anti-Frozen
- Standalone Operating

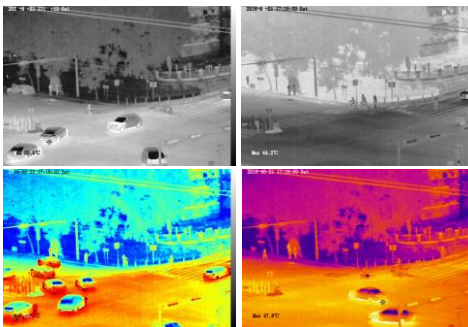
### System Overview

Featuring a motorized lens PTZ camera, this series provides an all-in-one solution that is especially beneficial for long distance video surveillance in outdoor applications. Together with Thermal technology, the camera's long range capabilities are able to be utilized even at night.

### Functions

#### Image Color Modes

White hot/black hot/iron bow/rainbow up to 17 modes



#### Temperature Detection

20 spots, 2 lines, 16 areas

Temp-Detection Range: -40°C~150°C (-40°F~302°F)



#### Compatibility

ONVIF Compatible, also provide CGI and SDK for integration



#### IVS Security

Video Analytics with Perimeter, Single Virtual Fences, Double Virtual Fences, Object Left, Object Removed



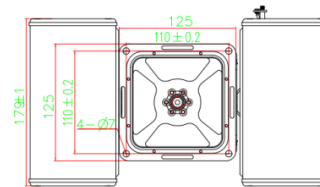
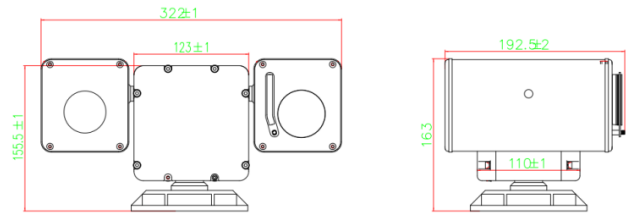
# Technical Specification

Thermal Camera		
Detector Type	Uncooled IRFPA Microbolometer	
Effective Pixels	400(H) × 300(V)	
Pixel Size	17um	
Thermal Sensitivity (NETD)	40mK @F1.0, 300K	
Spectral Range	8~14um	
Image Setting	Polarity LUT/ DVE/ Mirror/ FCC/ /3D DNR Brightness/Contrast/ ROI	
Color Palettes	Black-Heat /White-Heat/Rainbow/Iron-Red up to 17 modes	
Thermal Lens		
Lens Type	Fixed	
Focus Control	Motorized Focus	
Focal Length	8mm	25mm
F No.	F1.0	F1.0
Angle of View	H: 46° V:35.3°	H:15.4° V:11.6°
Detection Distance Fire(1m*1m)	235m	735m
Detection Distance Man(1.8m*0.5m)	235m	735m
Detection Distance Vehicle(4m*1.5m)	722m	2255m
Recognition Distance Fire(1m*1m)	78m	245m
Recognition Distance Man(1.8m*0.5m)	59m	184m
Recognition Distance Vehicle(4m*1.5m)	180m	564m
Visible Camera		
Image Sensor	1/2.8" Sony CMOS	
Effective Resolution	2048 (H) × 1536(V)	
Shutter Speed	1/5 ~ 1/20,000s	
Min. Illumination	Color: 0.01Lux @(F1.2, AGC ON), B/W: 0.1Lux	
S/N Ratio	More than 55dB	
Visible Lens		
Focal Length	4.5 ~ 135mm	
Max Aperture	F1.6~F4.4	
Angle of View	H:59.8°~2.3°	
Optical Zoom	30x	
Focus Control	Auto / Manual	
Close Focus Distance	100mm~ 1500mm (0.33ft~3.28ft)	
PTZ		
Pan/Tilt Range	Pan: 0° ~ 360° endless; Tilt: +90° ~ -90°	
Pan/Tilt Speed	Pan: 0.01° ~30° /s; Tilt: 0.01° ~10° /s	
Preset Speed	Pan: 0.01° ~30° /s; Tilt: 0.01° ~10° /s	

Presets	400
PTZ Mode	8 Auto Scan, 12 Tour, 6 Track
Speed Setup	Auto/Manual (0-8),
Power Off Memory	Support
Idle Motion	Activate Preset/ Scan/ Tour/ Pattern if there is no command in the specified period
Protocol	SN-SD, Pelco-D
Video and Audio	
Compression	H.265, H.264, MJPEG
Frame Rate	Main Stream: Thermal: D1 @25/30fps Visible: 2048×1536 @25/30fps Sub Stream: Thermal: CIF @25/30fps Visible: D1/VGA/640×360/CIF/QCIF/QVGA @25/30fps
Bit Rate Control	CBR/VBR
Bit Rate	Thermal: 100Kbps~6Mbps Visible: main stream: 500Kbps~12Mbps; sub stream: 100Kbps~6Kbps
Region of Interest	Off / On (8 Zone, Rectangle)
Electronic Image Stabilization(EIS)	N/A
Digital Zoom	16x
Mirror	Support
Defog	Support
Motion Detection	Support
Privacy Masking	Off / On (4 Area, Rectangle)
DVE Image Enhance	Support
Audio Compression	G.711, AMR, RAW_PCM (Optional)
Intelligence	
Intelligent Functions	Motion detection, Disk alarm, I/O alarm, Temperature alarm
IVS	Perimeter, Single Virtual Fences, Double Virtual Fences, Object Left, Object Removed
Temperature Detection	
Detection Mode	Spot, Line, Area
Detection Preset	Spot: 20, Line: 2, Area: 16
Temperature Alarm	Over temperature alarm, Temperature difference alarm
Accuracy	±2°C / ±2%
Response Time	≤30ms
Effective temperature working environment	-30°C~60°C(-22°F~140°F)
Theory of temperature measurement range	-40°C~150°C(-40°F~302°F)
Temperature display mode	Temperature target >5°C, Display absolute temperature value, Temperature target ≤5°C, Display relative temperature value (temperature difference DEV = highest value - average)

Network		
Ethernet	RJ-45 (10/100Base-T)	
Protocols:	IPv4/IPv6 ,HTTP ,RTSP/RTP/RTCP, TCP/UDP, DHCP, DNS, PPPOE, SMTP, SIP ,802.1x	
Interoperability	ONVIF, CGI	
Streaming Method	Unicast	
Max. User Access	10 Users	
Edge Storage	NAS Local PC for instant recording Micro SD card 128GB	
Web Viewer	<IE11, Chrome, Firefox	
Web Language	English, Chinese, Polish, Italian, Portuguese, Spanish, Russian, French, Czech, Hungarian	
Interface		
Ethernet	1 Ethernet (10/100 Base-T) RJ-45 Connector	
Audio	N/A	
Alarm	1ch Alarm Out	
RS485	Support	
BNC Output	Support	
Reset Button	Support(Built-in)	
General		
Power Supply	DC24V	
Power Consumption	Max 30W	
Operating Temperature	-30°C~60°C(-22°F~140°F)	
Storage Conditions	0~ 90% RH	
Certifications	CE /FCC	
Ingress Protection	IP66	
Casing	Metal	
Dimensions	322× 192× 163mm	
Net Weight	5Kg	
Ordering Information		
Type Part	Number	Description
MS7000D-PTZ-MTD Mini Series	MS7000D-PTZ-MTD-0830	Thermal: 400×300 8mm motorized lens
	MS7000D-PTZ-MTD-2530	Thermal: 400×300 25mm motorized lens

## Dimensions(mm)



## Accessories

Optional: N/A