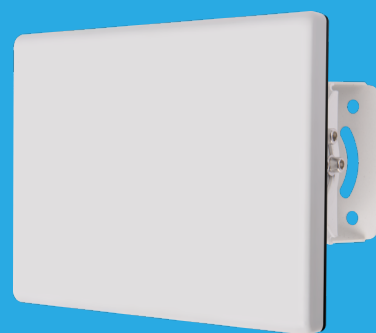


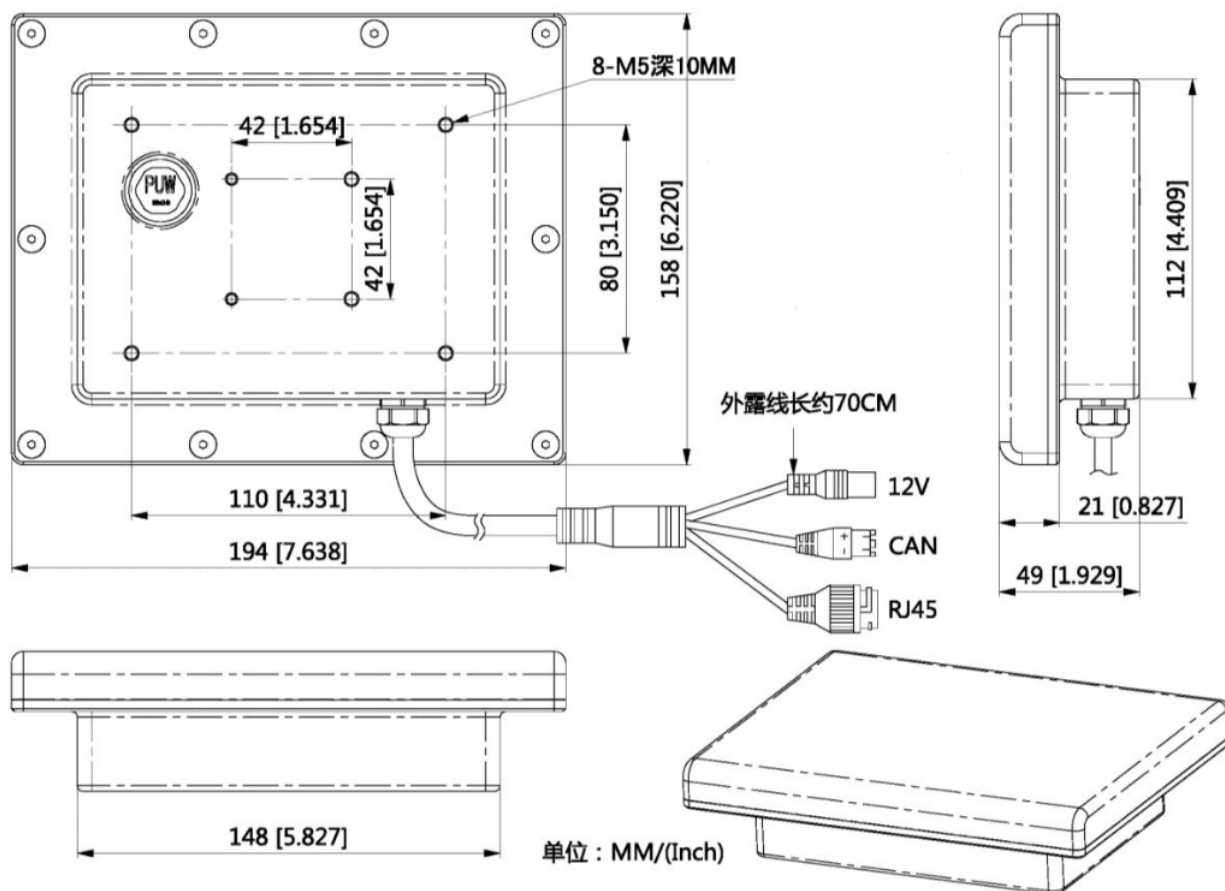
MoviSight

MS-7R120A

Wide Area Detection Radar



Dimensions (mm)



Specification

Radar Characteristics	
Radar Sensor	FMCW Radar
Radar Output Data	Distance, direction, angle
Transmit Frequency	24GHz K-Band
Refresh Rate	8Hz
EIRP	22dBm
Power Consumption	9W
Detection Performance	
Target Identification	People, Vehicles
Recognition Pattern	Radar triggers an alarm, linkage video review
Detection Range (Pedestrian)	1~150m
Detection Range (vehicle)	1~180m
Detection Accuracy	±0.5m
Detection Resolution	1m
Speed Range	0.5m/s~30m/s
Speed Accuracy	0.03m/s
Speed Resolution	0.06m/s
Angle Accuracy	±1°
FOV	Azimuth:90°; Elevation:13°
Hardware Characteristics	
Communication Protocol	UDP, TCP
Network Interface	1 RJ45 10M/100M (PoE)
Alarm Interface	2ch input, 1ch output
RS485	Support
Relay	2
Physical Characteristics	
Power Supply	12VDC/PoE (IEEE802.3af)
Working Temperature	-40~75℃
Storage Temperature	-40~85℃
Weight	1.0kg
Dimension	194×158×49mm
Protection Class	IP66