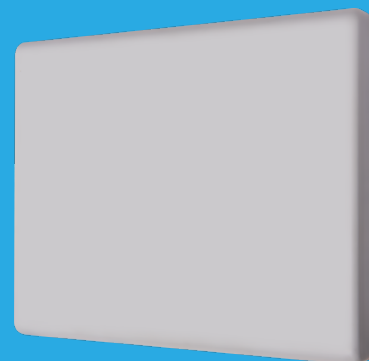


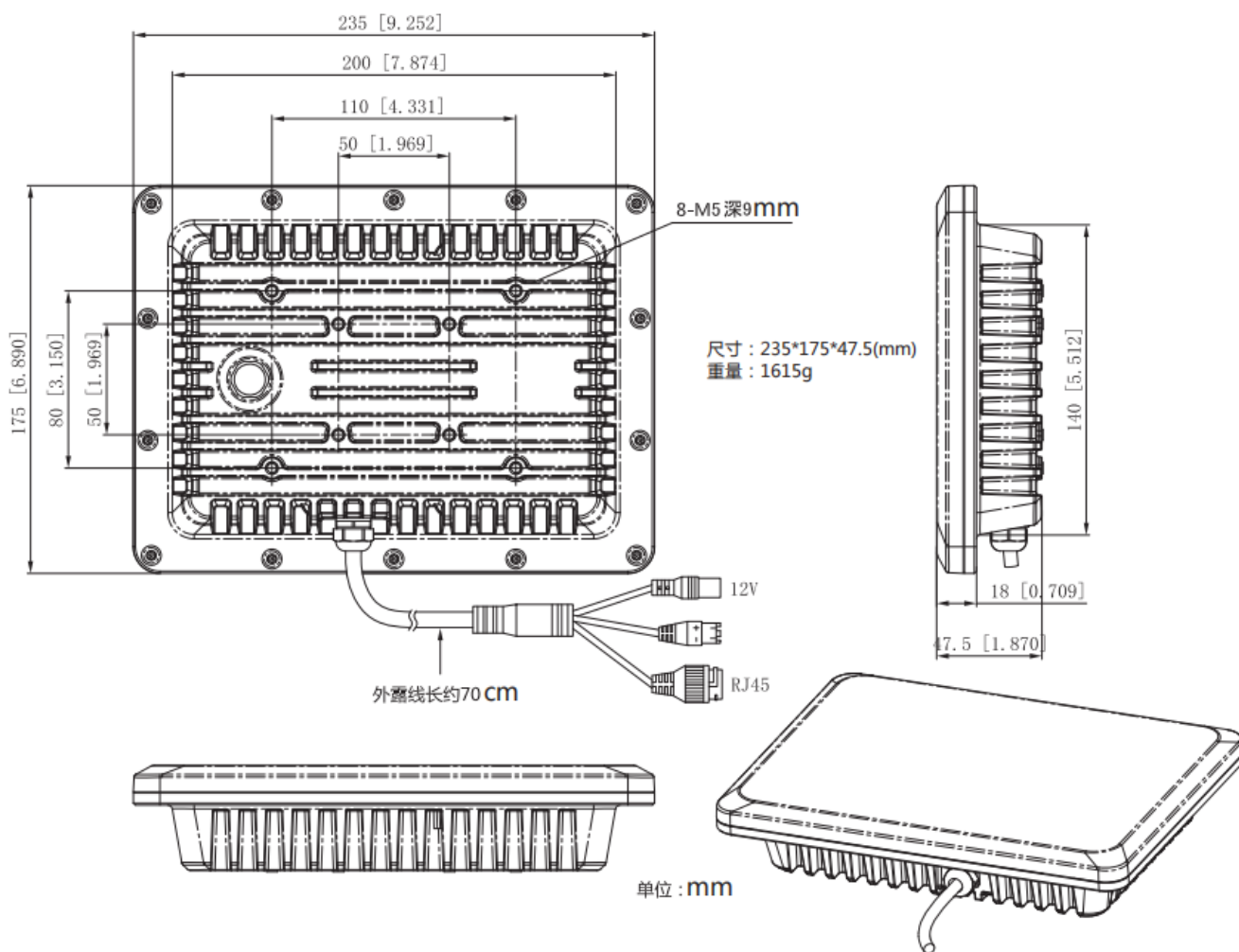
MoviSight

MS-7R450A

Wide Area Detection Radar



Dimensions (mm)



Specification

Radar Characteristics	
Radar Sensor	FMCW Radar
Radar Output Data	Distance, direction, angle
Transmit Frequency	24.00~24.1GHz
Refresh Rate	8Hz
EIRP	39dBm
Power Consumption	17W
Detection Performance	
Target Identification	People, Vehicles
Recognition Pattern	Radar triggers an alarm, linkage video review
Detection Range (Pedestrian)	1.5~450m
Detection Range (vehicle)	1~600m
Detection Accuracy	±0.75m
Detection Resolution	1.5m @human, 6m @ship
Speed Range	0.5m/s~30m/s
Speed Accuracy	0.006m/s
Speed Resolution	0.003m/s
Angle Accuracy	±1°
FOV	Azimuth:90°; Elevation:13°
Hardware Characteristics	
Communication Protocol	UDP, TCP
Network Interface	1 RJ45 10M/100M (PoE)
RS485	Support
Physical Characteristics	
Power Supply	12VDC/PoE (IEEE802.3af)
Working Temperature	-40~75℃
Storage Temperature	-40~85℃
Weight	1.0kg
Dimension	235×175×47.5mm
Protection Class	IP66